

# BARDOT™

Design GUNILLA LAGERHEM ULLBERG  
WOVEN rug IN pure WOOL



KASTHALL



Bardot – Black 500



# PRODUCT SPECIFICATIONS

Bardot is a woven rug in 100% wool, inspired by classic Bardot checks. The small checks form a subtle pattern, and the five sophisticated colour combinations make the rug easily adaptable to a variety of settings – from private homes to public environments. Bardot is also excellent for installing as an exclusive wall-to-wall carpet.

**Product type:** Woven rug in pure wool

**Weft material:** 100% wool

**Warp material:** 100% linen

**Size:** Custom made sizes, width 70-600 cm. Or choose amongst our suggested sizes: 90x240 cm, 140x200 cm, 170x240 cm, 200x300 cm, 250x350 cm. Also suitable as an exclusive wall-to-wall carpet.

**Total height:** approx 5 mm

**Total weight:** approx 2200 g/m<sup>2</sup>



(EN 1307) Class 33  
Commercial heavy



Burning classification:  
(EN 13501-1) Cfl-s1



Acoustical sound  
absorption

Acoustics:  $\alpha_w E, \Delta L_w 8B$ . Conforms with requirements in Green Label Plus

## CARE ADVICE WOVEN RUGS

To further extend the lifetime of your rug, Kasthall recommends a regular maintenance so that the rug may retain its shape and appearance. If you have a light, single-colour rug you will need to care for it more often than a darker, patterned rug. It is also a good idea to use a rug underlay to prolong the life of your woven rug and prevent it from slipping on any type of floor. Thorough vacuuming is the best, most economical and environmentally friendly method of cleaning. Beating or shaking a rug may damage the fibers. It is most efficient to vacuum the rug one direction at a time.

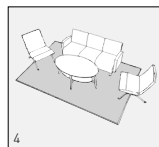
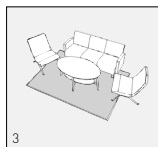
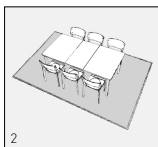
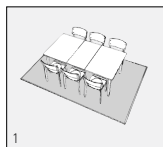
## CLEANING ADVICE

We recommend that the rug is cleaned by a professional cleaner, using the extraction method on a flat surface. The quantity and temperature of the water will depend on the material. Good ventilation during the drying process is essential. Shrinkage will be about 3–5%. Kasthall's rugs are not to be machine-washed or dry-cleaned. At [www.kasthall.com](http://www.kasthall.com) you can read more about our materials, how to look after your rug and our stain guide.

## CHOOSING A RUG

Choose the characteristics of the rug, its colour and design to suit the space in which it will be laid. If it is to be laid in a hall, for example, you may choose a type of rug that is more resistant to wear, and a colour that is a little darker and dirt-tolerant. Use a rug as a means of bringing together the rest of the interior. Decide whether you want to place a sofa on the rug or at its edge. If a rug is to be placed underneath a dining table, add at least 60 cm all round the table to allow space for pulling out the chairs.

Woven rugs are suitable for most settings, both public and private. Ideal for use in domestic settings such as dining rooms, halls and kitchens, and in retail environments, conference premises and corridors. May also be laid as a carpet.



Examples of commonly used rug sizes:

1. Dining table with 6 chairs: rug size 200 x 300 cm
2. Dining table with 6 chairs: rug size 250 x 350 cm
3. Three-seat sofa with armchairs: rug size 170 x 240 cm
4. Three-seat sofa with armchairs: rug size 200 x 300 cm

## OTHER INFORMATION

- Depending on the materials used and the rug-making process, dimensions may vary by up to  $\pm 5\%$  so please state maximum or minimum dimensions when placing your order.
- Note that all rugs from Kasthall are made from natural materials. Variations in colour and texture can therefore arise between batches of yarn and dye baths.
- Rugs should be laid on an underlay that prevents them from moving on all types of flooring. This extends the life of the rug and reduces the risk of slipping.
- The use of backing fixes the dimensions of a rug and extends its life. This is recommended for rugs that are wider than 200 cm and/or those larger than six sqm.

## ENVIRONMENT AND SOCIAL RESPONSIBILITY

At Kasthall environmental work is a very natural part of what we do and what we stand for – today and for generations to come. Naturally we are certified according to the environmental standard ISO14001, and many of our products bear the symbols of LEED, BASTA etc. These certificates confirm our continuous efforts. All our rugs are made to order in Sweden, using the finest renewable natural materials. Our working environment reflects the creativity and quality that we strive for – in design, materials and manufacture. Read more about our environmental work and philosophy at [kasthall.com](http://kasthall.com)



Beige 800



Blue 200



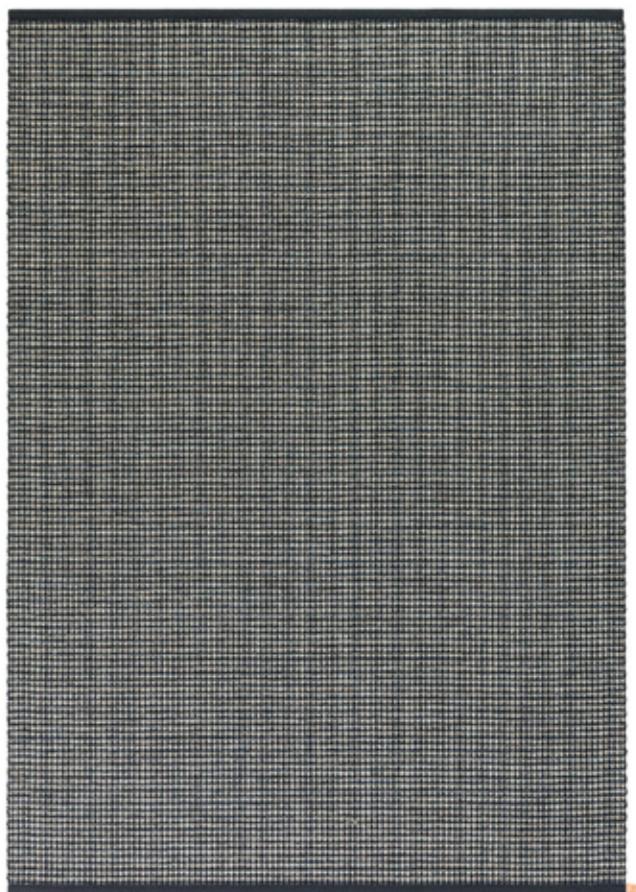
Green 300



Cassis 620



Black 500



Blue 200

Showrooms in MILAN • NEW YORK • STOCKHOLM • GOTHENBURG

---

**KASTHALL HQ SWEDEN**

Phone +46 320 20 59 00, Fax +46 320 20 59 01  
Fritslavägen 42, Box 254, SE-511 23 Kinna, Sweden  
info@kasthall.se

For the latest updates of our collection, please visit [www.kasthall.com](http://www.kasthall.com)

All the designs shown here are protected under law. Kasthall have the property rights and distribution rights worldwide. Copying will be prosecuted.



**KASTHALL**